

## Ecosystem Awareness A Natural Balance



Observe and investigate woodland and aquatic habitats and discover the dynamic relationships.



Compare and contrast what various species need and depend on to survive. Recognize the threats to these habitats and their interdependency.

*Sessions can be combined together or with Leadership/Team Building offerings.*

Trained staff include a leadership facilitator certified in challenge course elements by the Association for Challenge Course Technology, an Environmental Educator, and a Recreation Specialist.

All **TREE** staff have experiential training in outdoor education as well as CPR & First Aid.



**Program Sessions  
available throughout the year  
Monday thru Friday  
8:00 am - 4:00 pm**

To schedule your group and begin designing your sessions, please contact Ann Rossignol:

Phone: 207-324-7955 X 644  
Fax: 207-324-6050  
E-mail: [TREE@waban.org](mailto:TREE@waban.org)  
Website: [www.treecenter.org](http://www.treecenter.org)



[www.treecenter.org](http://www.treecenter.org)



[www.facebook.com/TREEctr](https://www.facebook.com/TREEctr)



**TREE Environmental Education  
is a social enterprise of Waban.**

## Environmental Education Center



**Active Exploration of the  
Environment**



5 Dunaway Drive Sanford, ME 04073  
(207) 324-7955 [www.treecenter.org](http://www.treecenter.org)

## Explore the Environment



- Unique hands-on learning opportunities along a forested corner of Bauneg Beg Lake, trails through the woodlands, sandy beachfront, and a naturally buffered shoreline.
- Tandem kayaks and snowshoes allow further investigation year round on shore and upon the water.
- Exploration and discovery through activities, investigations and problem solving encourage self discover, creativity, interaction, and promotes good stewardship.



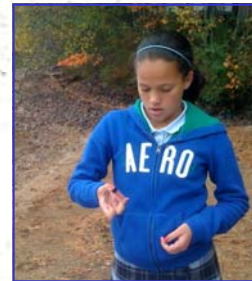
*Programs are custom designed to meet the needs of your group.*

## Environmental Education Sessions:



### Watershed: Keeping our Lake Healthy

- Understand what a watershed is.
- Define permeable/impermeable surfaces and point/non-point sources of pollution.
- Explain the effects of run-off.
- Recognize how each individual contributes to the health of our lakes.



### Water Quality Testing: What's in the Water?

- Properly collect and test the basic characteristics of water; turbidity, temperature, dissolved oxygen and phosphorus.
- Recognize the limited amount of useable water.
- Learn how our actions affect water quality and the importance of protecting this essential resource.

### Weather Monitoring: What's your Forecast?

- Identify what weather is, how it is monitored, and atmospheric conditions.
- Measure, observe, and record current conditions then analyze current and past conditions.



### Flora/Fauna Identification/Habitat: Who Lives Where?

- Observe and identify woodland and/or aquatic plants and animals.
- Discover the relationships between the local environment and what lives within it.
- Study common characteristics, classification of species, and adaptation to their environment.

